

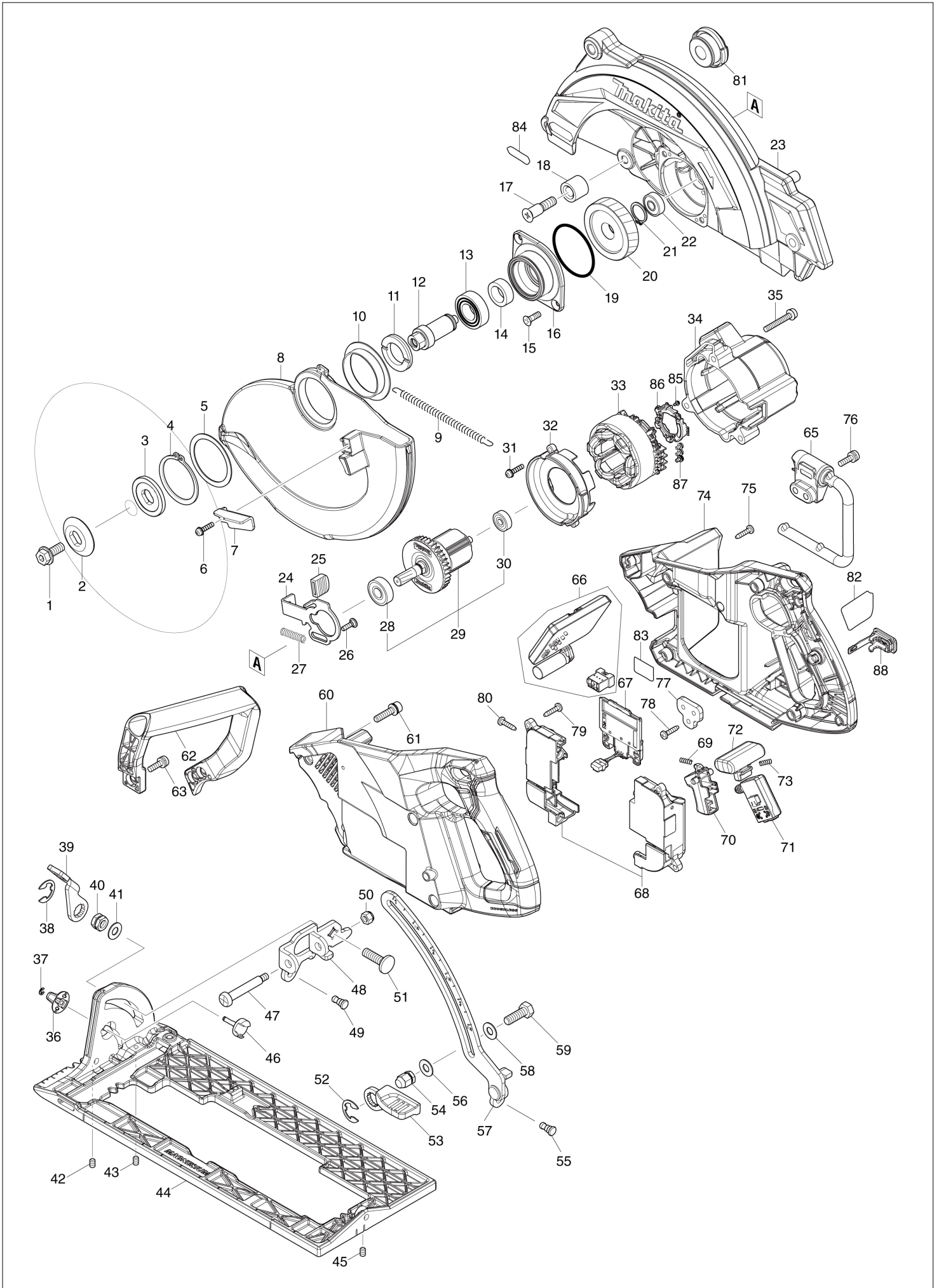


Robbantott ábra / Alkatrészlista

RS002G

260MM Akkumulátoros körfűrész

RS002G / 260MM Akkumulátoros körfűrész



RS002G / 260MM Akkumulátoros körfűrész

Item	Sub	Parts No.	Parts Description	Qty	I/C	E/C No.	Close No.	Remark
001		266400-6	HEX. SOCKET HEX. BOLT M8X20	1				
002		224613-5	OUTER FLANGE 40	1				
003		224360-8	INNER FLANGE 40	1				
004		961202-2	RETAINING RING S-45	1				
005		267219-6	FLAT WASHER 45	1				
006		911531-3	P.H.SCREW M4X18 WITH WRM	1				
007		271467-1	LEVER 40	1				
008		312A93-4	SAFETY COVER	1				
009		232675-9	TENSION SPRING 7	1				
010		413356-6	SPACER	1				
011		285809-3	BEARING RETAINER 23-36	1				
012		326941-5	SPINDLE	1				
013		211251-2	BALL BEARING 6003LLB	1				
014		257024-9	RING 17	1				
015		265034-2	+ COUNTERSUNK HEAD SCREW M5X1	2				
016		312A94-2	BEARING BOX	1				
017		265B77-6	+COUNTERSUNK HEAD SCREW M8X3	1				
018		262200-2	RUBBER SLEEVE 10	1				
019		213676-6	O RING 53	1				
020		227873-8	HELICAL GEAR 57	1				
021		961057-5	RETAINING RING S-17	1				
022		210029-0	BALL BEARING 608ZZ	1				
023		140Y58-8	BLADE CASE COMPLETE	1				
	C10	213434-0	O RING 26	1				
024		347168-4	SHAFT LOCK	1				
025		286039-9	CAP	1				
026		251529-1	+ PAN HEAD SCREW M4X14	1				
027		232381-6	COMPRESSION SPRING 6	1				
028		210059-1	BALL BEARING 6000DDW	1				
029		519667-8	ROTOR ASSY	1				
	D10		INC. 28,30					
030		210022-4	BALL BEARING 626DDW	1				
031		911531-3	P.H.SCREW M4X18 WITH WRM	2				
032		413359-0	BAFFLE PLATE	1				
033		629A40-1	STATOR	1				
034		140Y63-5	MOTOR HOUSING COMPLETE	1				
	C10	263002-9	RUBBER PIN 4	1				
035		911258-5	PAN HEAD SCREW M5X35	3				
036		457963-5	DIAL 22	1				
037		961017-7	STOP RING E-3	1				
038		257953-6	BOW STOP RING E-12	1				
039		271468-9	LEVER 56	1				
040		264006-4	HEX. NUT M8-13	1				
041		941201-0	FLAT WASHER 8	1				
042		266229-0	H.S.SET SCREW(CUP POINT)M5X8	1				
043		266229-0	H.S.SET SCREW(CUP POINT)M5X8	1				
044		312A92-6	BASE	1				
045		266229-0	H.S.SET SCREW(CUP POINT)M5X8	1				
046		327760-2	STOPPER PIN	1				
047		251221-9	+ PAN HEAD SCREW M6	1				
048		347169-2	ANGULAR GUIDE	1				
049		256511-5	SHOULDER PIN 6-7	1				
050		252014-7	HEX. LOCK NUT M6-10	1				
051		266227-4	CAP SQUARE NECK BOLT M8X28	1				
052		257953-6	BOW STOP RING E-12	1				
053		271433-8	LEVER 59	1				
054		252240-8	HEX. CAP NUT M8-13	1				
055		256511-5	SHOULDER PIN 6-7	1				
056		941201-0	FLAT WASHER 8	1				
057		162958-2	DEPTH GUIDE	1				
058		941201-0	FLAT WASHER 8	1				
059		251538-0	HEX. BOLT M8X24	1				
060		183S81-4	HANDLE SET	1				
	C10	263005-3	RUBBER PIN 6	1				
	D10		INC. 74					

B:RS002GT101(H)

Interchange
O : Yes
X : No
< : the new part can be substituted for the current.
> : the current part can be substituted for the new.
S : Interchangeable as a set.

